

SANMOTION F2

2-PHASE STEPPING SYSTEMS

Stepping Motor with Lead Screw

42mm sq.

1.8°/step

Application

Medical instrumentation, syringe pumps, 3D printing machine

Features

Recommended max. Load 80N
Max. Speed 200mm/s

Standard Stroke 94mm
Max. Stroke 250mm

Downsizing and simplification of design and assembly

This product incorporates a leadscrew inside the stepping motor to make it compact. This allows equipment size to be reduced.

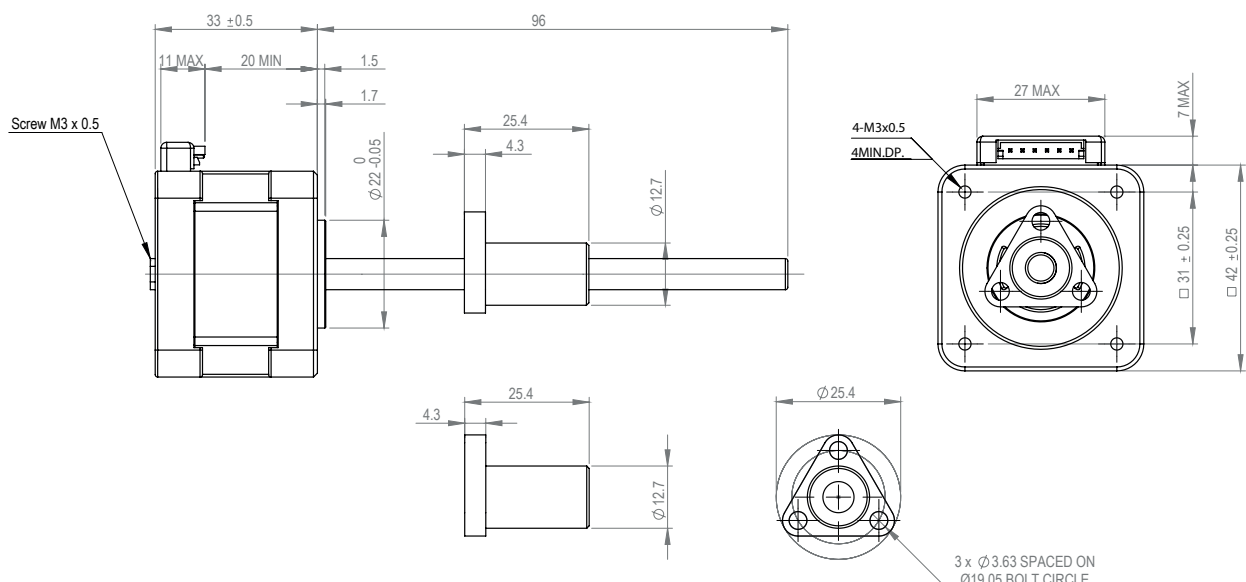
Easy Linear Motion Control

The stepping motor technology allows an easy and accurate control of the position, according to the number of pulses received by the driver.

High Construction Flexibility

Thanks to several choices of motors, screws and nuts this solution suits the best for your requirements. Customized products are available on request.

Dimensions [Units: mm]



Specifications

1.8°/Step Bipolar winding

Standard Models (others on request)	Max. Force [N]	Recommended load limit [N]	Max. Speed - half step [mm/s]	Resolution [μm/ full step]	Stroke [mm]	Rated current [A/phase]	Winding resistance [Ω/phase]	Winding inductance [mH/phase]	Optional motor cable [500 mm]
2S4233B100-0094-N000	600	80	75	7.95	94	1	3.4	6.5	4835728-1
2S4233B100-0094-X000	225	80	300	31.75					

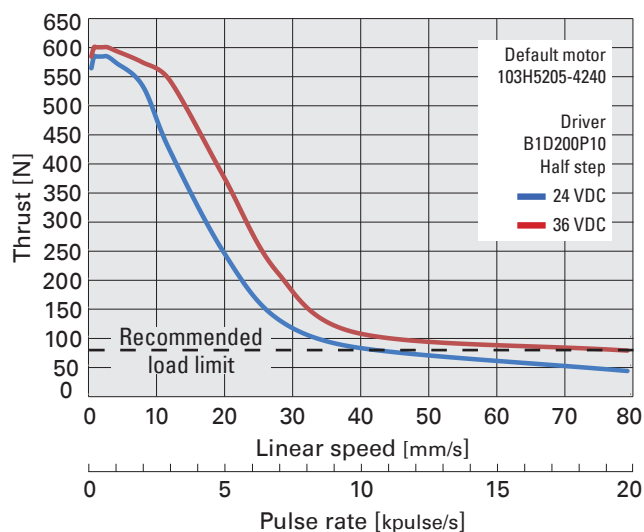
	Material	Coating	Accuracy [mm/mm]
Leadscrew	Stainless Steel 303	TFE	better than 0,0006

	Material
Nut	Polyacetal with lubrification

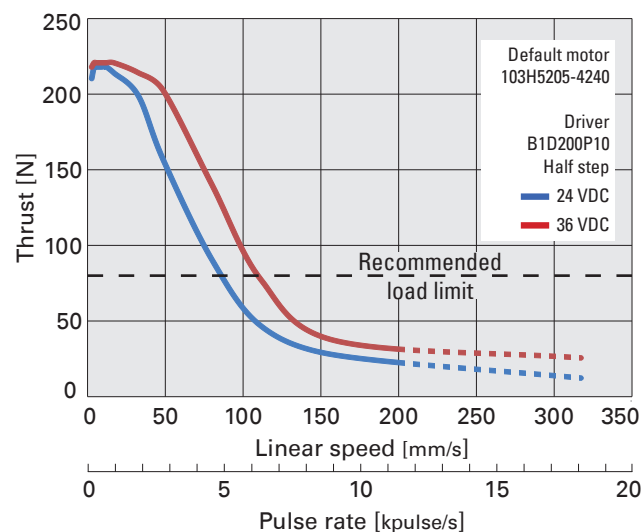
Please consult us for customized models.

Thrust [N] - Speed [mm/s] curves, 100% duty cycle

Model No : 2S4233B100-0094-N000



Model No : 2S4233B100-0094-X000



Caution: The data are only for reference and may vary depending on the application and nut. Please consult our technical center for more details.

Part Numbers

2S 4233 B100-0094-N000

Serie 2S 2-phase stepper with integrated lead screw	
Motor Dimensions Flange x Length 4233 : 42 x 33mm	
Current/Phase B : Bipolar 100 : 1A U : Unipolar xxx: other	
Screw Length 0094 : 94mm (max. 250mm)	
Actuator Resolution N : 0.00795 mm/step X : 0.03175 mm/step x: other	
Options 000 : standard xxx: other	

Customization

We offer fully customizable products to meet your exact needs. In order to define the proper solution, please fill in our dedicated application sheet «**MC_160222**».

Among requested information, here is a list of basic requirements:

What is the required FORCE ?		N
What is the LINEAR SPEED ?		mm/s
What is the STEP INCREMENT ?		mm/step
What is the length of STROKE ? (max. 250mm)		
Winding and current per phase ?	<input type="checkbox"/> Bipolar <input type="checkbox"/> Unipolar	A/phase
Requested LIFE TIME ?		cycles

For more information on «Stepping motor with Lead Screw», please contact us at +33 1 48 63 26 61 or email us at info@sanyodenki.eu.